

*Performance with Style*



**VOYAGER**  
CATAMARANS

Phone: +61 7 3382 7400  
Facsimile: +61 7 3382 7433  
2/13 Octal Street, Yatala Q. 4207  
[info@voyagercats.com.au](mailto:info@voyagercats.com.au)  
[www.voyagercats.com.au](http://www.voyagercats.com.au)

**VOYAGER**  
CATAMARANS

*Performance with Style*



# VOYAGER

## CATAMARANS

Voyager Catamarans is based in the heart of Australia's boat building industry on Queensland's Gold Coast, and designs and builds a modern new range of power catamarans to provide for a largely under serviced pleasure market. As a family business, the dedicated staff provide a personalized friendly service that works hard to identify each customer's needs, and then helps them to effectively achieve their goals.

Design engineer (and company founder) – Derek Appleton, engaged specialist Naval architects to take advantage of state of the art technology to create advanced new hull designs producing superior sea keeping abilities with more efficient performance. Voyager is now Australia's leading production builder of cruising power catamarans.

### Design

The safety, stability and performance advantages of catamarans have long been recognized by Sea Rescue and Commercial operators, but the interest and demand of pleasure boaters had been largely ignored with only boxy looking, or pure fishing designs with few creature comforts being previously available.

Voyager catamarans have brought power cats into the 21st century. They are sleek, fast, soft riding and dry, and are luxuriously appointed to offer a level of style and comfort normally only associated with top ranking mono-hulls. The innovative layouts are roomy and practical with the maximum use of space embarrassing much larger vessels. The shallow draft and fully protected props are an added bonus in tidal areas, and also allow for beaching if necessary.

### Economy

Voyager catamarans can operate on a quarter to a third, of the fuel consumption of equivalent mono-hull boats, and with fuel costs continually on the rise, this is becoming a major factor in the purchasing decisions of new boat owners. The advanced primary engines used by Voyager can also be run on bio-diesel, kerosene

and other alternatives that will become more prevalent in future as traditional fuel becomes too expensive.

This gives Voyager owners the ability of further reducing running costs in future, and these benefits alone, have underpinned the resale values of Voyager cats as more used buyers become aware of the advantages, and also strive to get more from their lifestyle investment.

### Construction

All hulls have a structural lay up equivalent to 2C offshore survey and feature solid glass to the waterline, and the extensive use of high strength, light weight sandwich composites in the topsides, decking, floors and bulkheads. Glass laminates are engineered with layers of hand laid multi-axial woven glass cloth ensuring uniform thickness and maximum strength. This reduces overall vessel weight, which reduces engine size, which reduces fuel consumption and fuel storage, which in turn further reduces weight helping these vessels to perform so well with smaller and more economical engines.

This dedication to high quality construction results in constant development of the product, and is further reflected in the final finish and attention to detail apparent on Voyager catamarans. The use of premium internal materials, linings and timber work again offers a luxurious feel but with durable and practical, easily maintained surfaces.

### Performance

Voyager's unique semi-displacement designs are the result of powerful Computer Aided Design (CAD) systems, combined with the use of high tech, computer controlled 5 Axis Milling Machines to accurately produce the shape of optimal designs. They feature greater forward buoyancy, progressive full length wave breaker, internal spray chines and high clearance tunnel.

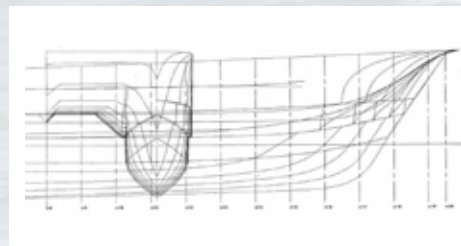
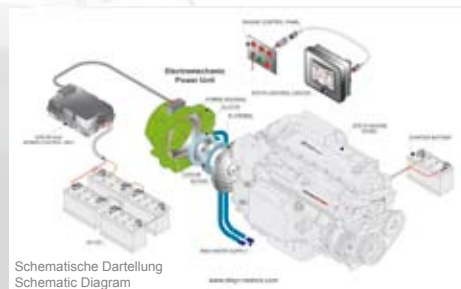
The greatly improved dynamics of the hulls gives unmatched rough water handling, while the air & water vapour is exhausted cleanly out the back and alleviating suck back effects that can exist on other boats.

These vessels are able to maintain higher average speeds in poor conditions while providing very stable and reassuring sea handling. The efficiency of the hulls can also be clearly seen in the very small wake left when traveling at speed.

### Environmental

An obvious benefit of the very efficient design and low fuel consumption is also the much lower pollution generated, but a less obvious one is the important reduction in the erosion of river or estuary shores from the very low wash (not to mention the comfort of other waterway users).

Voyager are also involved in development and production using Electric/Diesel Hybrid drives, which have received huge interest due to their ability to run in silent electric mode in marinas, or pollution sensitive areas, but switch to diesel mode on open seas and longer voyages. Another step is available on some power models which are designed to incorporate 'Sail Assist' for long, and low cost passages when conditions suit.



# The Voyager Fleet

Voyager Catamarans are distinctly different from other designs. Rather than simply a range of similar vessels with varying lengths, Voyager has developed a unique range with each model being designed specifically to suit their purpose



### The 'V930 Series'

Is a high speed planning design available in open 'Sports', or enclosed 'Express' configurations. It features accommodation for 4 to 6 people while the helm, galley and dinette are all on the one level flowing out into a large open cockpit area. The high clearance tunnel combined with a fine entry and internal chines gives a superb rough water ride and fitted with outboard or stern drive engines from 150 to 250 hp, it can exceed 40 knots.



### The 'VI040/1100 Discovery'

Has been specifically designed with the latest low drag, Semi-displacement hull form for fuel efficient performance, while the fully protected props allow for trouble free beaching when necessary. This easy to handle, stable and versatile boat, is ideal for fishing, family, offshore cruising, and charter work. Fitted with twin shaft drive diesels from 125 to 250hp, these vessels can exceed 25 knots, but cruise very economically at 15-20 knots.



### The 'VI250 Conquest'

Is unashamedly about more room and comfort. With wide access, 2.1mt headroom, 3 large cabins and a choice of 1 or 2 bathrooms, this vessel accommodates 6 or more people with an abundance of living space for extended cruising in style and comfort. The large well protected cockpit and aft platform is ideal for relaxing or entertaining, while the option of an enclosed flybridge, with moulded stairs and 10 person lounge, further confirms the VI250 Conquest is 'Oceans Apart' from other vessels in this size range.



### The 'VI270 Freedom'

Is a fresh and exciting development in offshore yachting, combining distinctive EURO styling, with luxurious accommodation, and genuine Ocean Cruising capability. The elegant lines are complimented by a spacious interior taking full advantage of its wider beam, to provide up to four separate cabins with two or more bathrooms. It also offers a sleek and practical 'Sports bridge' or the stylish 'Flybridge', and when combined with the new Hybrid Engine System, or Sail Assist options, is the ultimate long distance Power Catamaran.

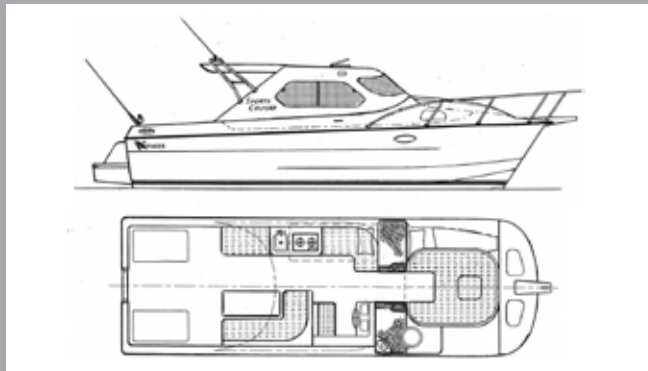




Available in open 'Sports', or enclosed 'Express' configurations, the V930 features accommodation for 4 to 6 people with two single berths in the port hull and a double forward berth over the central tunnel. The starboard hull contains a full height moulded bathroom with electric toilet, plus hot & cold shower and vanity, while the helm, gallery and dinette are all on the saloon level flowing seamlessly into the large open cockpit ideal for entertaining or fishing.

With its high tunnel clearance and minimal wetted surfaces, this very efficient hull gives superb offshore ride, and with outboard or stern drive engines from 150 to 250hp can exceed 40kts but leaves very little wake in its path.

The unique combination of advanced technology, together with practical design, comfort, and performance provides a versatile package perfectly suited to a multitude of uses.



<i>Specifications (V930)</i>		
Length overall	9.9m	42'7"
Beam overall	3.0m	17'4"
Draft	0.5m	1'8"
Bridge Clearance	3.1m	10'2"
Displacement (Dry)	3,500kg	7,700lb
Power Range	(2x) 150 – 250hp	
Fuel Capacity (Total)	900lt	
Water Capacity (Total)	300lt	
Accommodation Berths	Four to six in two cabins	
Service Speeds	20 - 40knots	



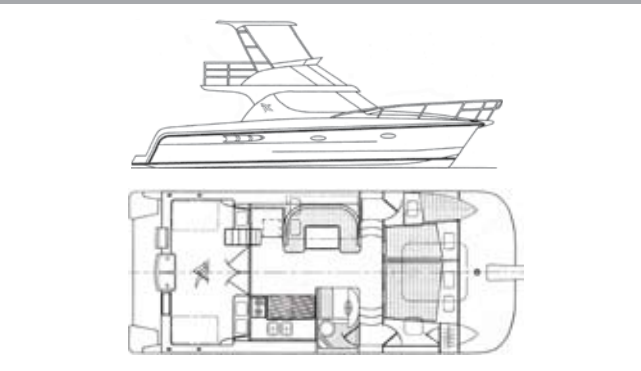
The stylish V1040/1100 Discovery Series has been specifically developed for the cruising and charter markets with the latest low drag, semi-displacement hull form giving high fuel efficiency and speeds of 15 to 25 knots.

Luxuriously appointed interior accommodates six to eight people in three cabins. The bright airy saloon also has a raised wrap around lounge and dinette and a galley layout

that opens onto a large covered cockpit with freezer, rubbish stowage, folding seating and BBQ. Moulded stairs provide easy access to the spacious flybridge with twin helm seats and contoured seating for another six people plus wet bar.

Available with twin diesel engines from 125 to 250hp, shafts and props are fully protected by the keels and the fine entry and tunnel clearance have given Voyagers a dry and comfortable offshore ride.

<i>Specifications (V1100)</i>		
Length overall	11.1m	36' 5"
Beam overall	4.25m	17' 4"
Draft	0.8m	2' 8"
Bridge Clearance	3.5/4.8m	12'/16'
Displacement (Dry)	7,000kg	15,400lb
Power Range	(2x) 125 – 250hp	
Fuel Capacity (Total)	750 – 1000lt	
Water Capacity (Total)	500 – 600lt	
Accommodation Berths	Six to eight in three cabins	
Service Speeds	15 – 25 knots	



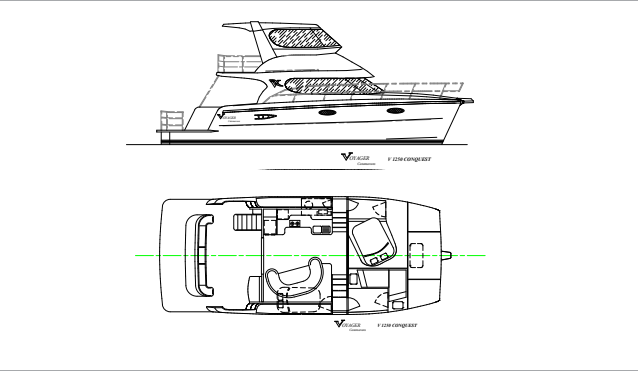




The **V1250 Conquest** has the feel of a much larger yacht because of its high ceilings and enormous volume. The hull is a highly fuel efficient semi-displacement. The galley features a tall two door fridge/freezer, oven, cooktop, and microwave, twin sinks and plenty of storage, while a plush raised wrap around lounge comfortably seats six.

Below decks features a generous bathroom with vanity, toilet and a separate shower cubicle. The luxurious master cabin has an

Island Queen berth and a substantial wardrobe. There is another double cabin and a twin king single cabin, with good width and two metre headroom. The cockpit has folding seats and steps to the side decks, freezer, BBQ, sink, and a huge fishing platform with seating, bait and kill tanks. The moulded and hinged stairway leads up to the spacious flybridge with dual helm chairs, fridge and table with seating for 10. The Conquest is available as an enclosed flybridge.



Specifications (V1250)			
Length overall	13.0m	42' 7"	
Beam overall	5.3m	17' 4"	
Draft	0.95m	3' 2"	
Bridge Clearance	3.9/5.0m	13'/17'	
Displacement (Dry)	9,000kg	19,800lb	
Power Range	(2x) 150 – 250hp		
Fuel Capacity (Total)	1,400lt		
Water Capacity (Total)	750lt		
Accommodation Berths	Six to eight in three cabins		
Service Speeds	15 – 25 knots		



The elegant lines and impressive cockpit of the V1270 are complemented by a carefully designed interior that provides a spacious and well lit socialising and dining area in the main saloon and a 'galley up' layout to impress the most discerning chef.

With a huge 6.6 metre beam and combinations of up to four separate cabins, the V1270 provides an abundance of accommodation for six - 10 people, with two or more bathrooms

and plenty of stowage and ventilation throughout. Highly efficient semi-displacement hulls are the key to low power and excellent fuel economy (up to 22 knots with 2 x 160hp) while the reserve buoyancy and high bridge deck clearance will carry you to those far away destinations in comfort.

The Voyager V1270 features either a sleek practical 'Sports bridge' or a stylish 'Flybridge'.

Specifications (V1270)			
Length overall	12.7m	42'	
Beam overall	6.67m	21' 10"	
Draft	1.0m	3' 4"	
Bridge Clearance	3.7/5.0m	12'/17'	
Displacement (Dry)	10,500kg	23,100lb	
Power Range	(2x) 125 – 250hp		
Fuel Capacity (Total)	1,700lt		
Water Capacity (Total)	800lt		
Accommodation Berths	Six to eight in three or four cabins		
Service Speeds	15 – 25 knots		

